



# ZONING DISTRICTS & DESCRIPTION

## Dwelling Zoning Districts

D-A	Agriculture, SFR on 3 acres min
D-S	SFR on 1 acre min
D-1	SFR on 24K sf min
D-2	SFR on 15K sf min, 2FR on 20K sf min, corners only
D-3	SFR on 10K sf min, 2FR on 15K sf min, corners only
D-4	SFR on 7200 sf min, 2FR on 10K sf min
D-5	SFR on 5K sf min, 2FR on 7200 sf min
D-5II	SFR on 2800, 2FR on 5K, SFR Attached on 2400 sf
D-6	2FR, SFR Attached, 3FR, 4FR, MF, Live-Work in Suburban setting (6-9 du/ac) next to SFR
D-6II	2FR, SFR Attached, 3FR, 4FR, MF, Live-Work in Suburban setting (9-12 du/ac) near SFR
D-7	2FR, SFR Attached, 3FR, 4FR, MF, Live-Work as Transition between Suburban and Urban settings
D-8	SFR, SFR Attached, 2FR, 3FR, 4FR, MF, Live-Work in Urban setting of mixed development
D-9	SFR Attached, MF, Live-Work High-rise in Suburban setting
D-10	SFR Attached, MF, Live-Work High-rise in Urban setting
D-11	Mobile Home community
D-P	Planned, creative, negotiated dwelling district

## Commercial Zoning Districts

C-1	Office
C-3	Neighborhood Retail
C-4	Regional Commercial
C-5	Auto-related Commercial
C-7	Truck, Big stuff Commercial/Industrial
C-S	Special, creative, negotiated commercial district

## Mixed-Use Zoning Districts

MU-1	Freestanding MU tower / node
MU-2	MU neighborhood, corridor-type development
MU-3	MU village (20-50 acres)
MU-4	MU village w/ rapid transit (8-25 acres)

## Central Business Zoning Districts

CBD-1	Monument Circle & surrounding blocks (4x4)
CBD-2	Balance of downtown generally
CBD-3	The Mall & surrounding blocks (Illinois-Delaware)
CBD-S	Special, superior, negotiated district in the CBD

## Industrial Zoning Districts

I-1	Restricted, Inside only
I-2	Light, Assembly, Packaging
I-3	Medium, Shaping, Cutting
I-4	Heavy, Blending, Heat/Chill, Liquids, Hazardous

SFR=single family residence; MF=multifamily

## Development Plan Districts

### Park Districts

PK-1	Parks
PK-2	Park-like development

### Hospital Districts

HD-1	Hospitals
HD-2	Hospital services, MF& group living, Day care

### Historic Preservation District

HP-1	Historic Preservation - Lockerbie
------	-----------------------------------

### University Quarter Districts

UQ-1	University
UQ-2	University-related housing

### Speedway Districts

SZ-1	Speedway Main Street District
SZ-2	Speedway Industrial District

## Special Use (SU) Districts

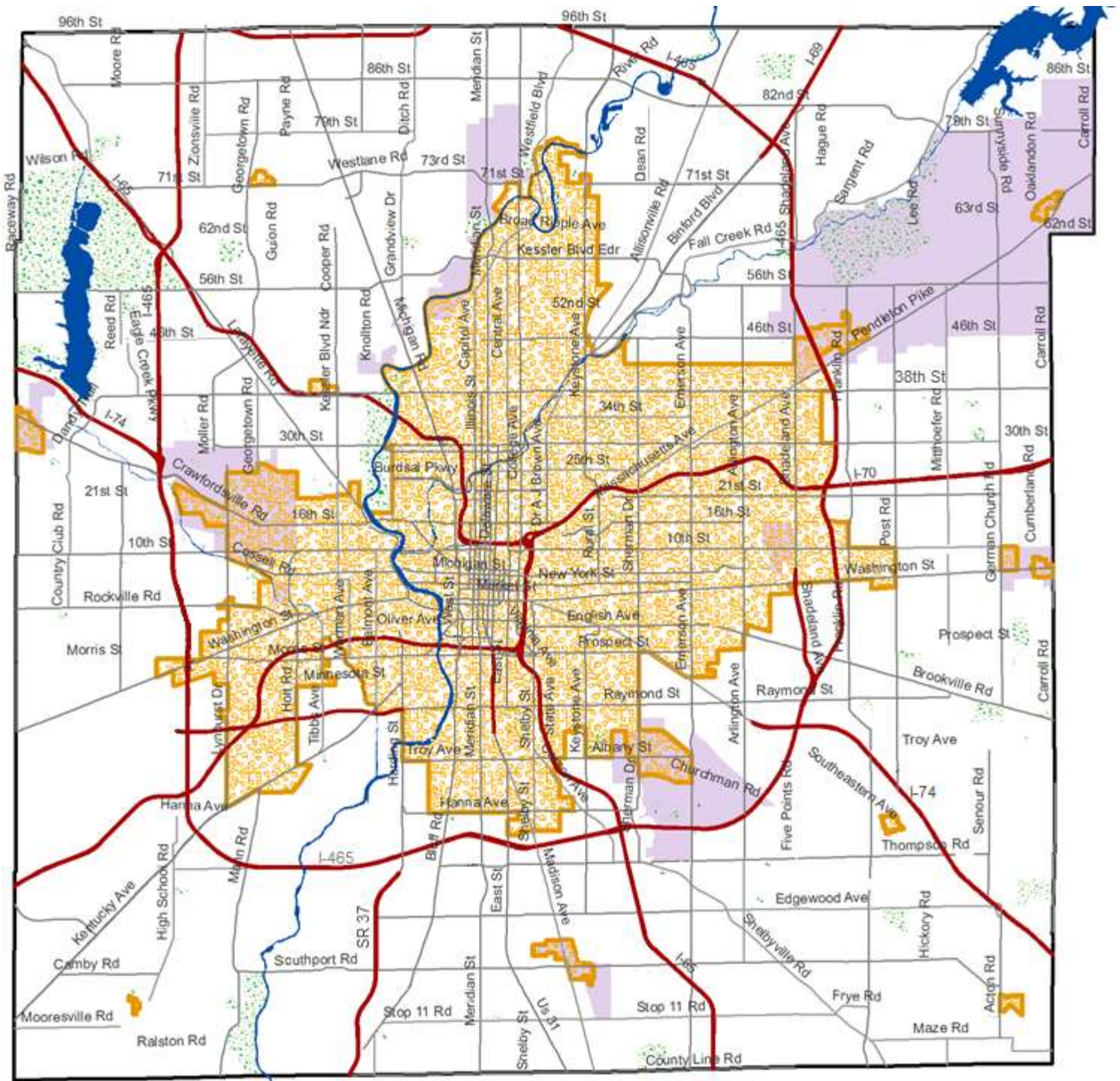
SU-1	Religious Use
SU-2	School
SU-3	Golf Course
SU-5	Radio Receiving or Broadcasting Tower
SU-6	Hospital, Sanitarium, Nursing Home
SU-7	Charitable Institution
SU-8	Correctional Institution *
SU-9	Government Buildings or Grounds
SU-10	Cemetery *
SU-13	Sanitary Landfill *
SU-16	Indoor or Outdoor Entertainment or Recreation
SU-18	Light or Power Substation *
SU-23	Permanent Sand or Gravel Plant *
SU-28	Petroleum Refinery and Storage *
SU-34	Club Room or Ballroom
SU-35	Telecommunications Broadcast Tower *
SU-37	Library
SU-38	Community Center
SU-39	Water Tank *
SU-41	Sewage/Garbage Disposal Plant
SU-42	Gas Utility
SU-43	Power Transmission Lines
SU-44	Off-track Mutuel Wagering Facilities
SU-45	Zoo, Aquarium and related facilities
SU-46	Airport

\* Use restricted to SU district only









# CONTEXT AREA MAP

Compact Context Areas are in Orange, all other areas are Metro Context areas



## LEGEND

- |   |  |
|---|--|
|  Compact Context |  Water bodies |
|  Cities & Towns  |  Expressways  |
|  Parks           |  Arterials    |