

COA # 2010-COA-548 (LS)	INDIANAPOLIS HISTORIC PRESERVATION COMMISSION STAFF REPORT	Hearing Date FEB. 2, 2011
308 N EAST ST LOCKERBIE SQUARE		Continued from: January 5, 2011
Applicant & mailing address:	JOSEPH SHIERLING 308 N East St Indianapolis, IN 46202	
Owner:	Same	Center Township Council District: 9 Jackie Nytes
EXPEDITED CASE		
IHPC COA: 2010-COA-548 (LS) Install landscaping lighting in front yard		
STAFF RECOMMENDATION: Approval		
STAFF COMMENTS		

Background

The property contains one townhouse unit that is part of a 5-unit complex built in 1984. The applicant applied on November 12, 2010 to add landscaping and lighting in the front yard. A COA was issued for landscaping and landscape pavers, however, landscape lighting in the front yard requires Commission approval. Therefore, the applicant filed the above request separately.

Proposed Landscape Lighting

The applicant is proposing to install seven landscape lights in the front yard. There will be three different styles of fixtures with two different types of lighting (path lighting and up lighting). All three styles will be copper and will have low wattage light bulbs (11-20 watts per fixture). Up lighting will be used to highlight plants and path lighting will be used for ambience and visibility of landscaping and sidewalk.

The Lockerbie Square Historic Area Plan

The preservation plan does not make specific recommendations about yard lighting.

Staff Analysis

Staff believes that because the fixtures are small, inconspicuous and generally low level wattage, no negative impact should occur on the structure or surrounding properties. In addition, the lighting is within the confines of a small, fenced yard where they will be inconspicuous.

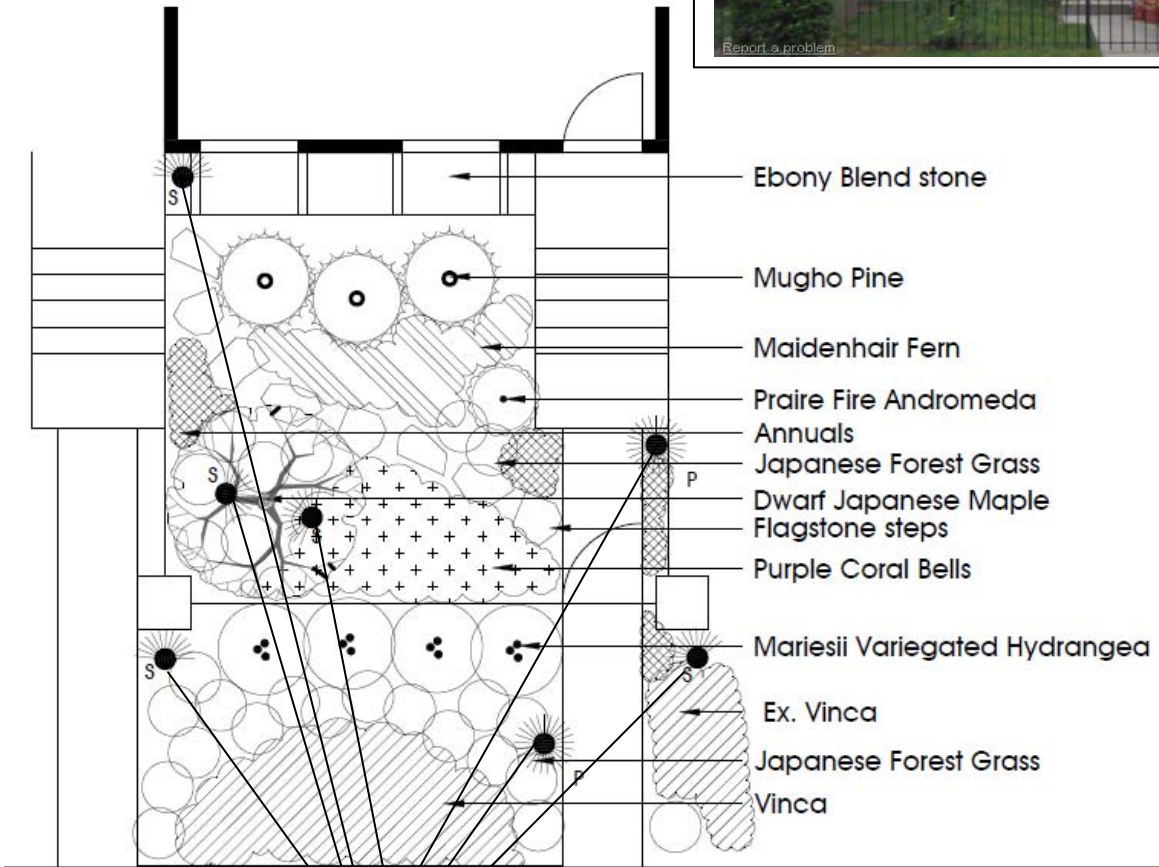
STAFF RECOMMENDED MOTIONS

2010-COA-548 (LS):

To approve a Certificate of Appropriateness to install landscape lighting in the front yard (seven fixtures total) as per the submitted documentation and following stipulation:

Any changes to the submitted site plan or the proposed fixture types, locations or light source must be approved by IHPC staff prior to installation.

Staff Reviewer: Meg Purnsley



Applicant is proposing seven fixtures in these locations. There will be three different styles of fixtures with two different types of lighting (pathlighting and uplighting).

