

<b>COA #</b> <b>2010-COA-548</b> <b>(LS)</b>	<b>INDIANAPOLIS</b> <b>HISTORIC PRESERVATION COMMISSION</b> <b>STAFF REPORT</b>	Hearing Date <b>MAR. 2, 2011</b>
<b>308 N EAST ST</b> <b>LOCKERBIE SQUARE</b>		Continued from: February 2, 2011 January 5, 2011
<b>Applicant &amp; mailing address:</b>	<b>JOSEPH SHIERLING</b> 308 N East St Indianapolis, IN 46202	
<b>Owner:</b>	Same	Center Township Council District: 9 Jackie Nytes
<b>EXPEDITED CASE</b>		
<b>IHPC COA: 2010-COA-548 (LS)</b> Install landscaping lighting in front yard		
<b>STAFF RECOMMENDATION: Approval</b>		
<b>STAFF COMMENTS</b>		

**Background**

The property contains one townhouse unit that is part of a 5-unit complex built in 1984. The applicant applied on November 12, 2010 to add landscaping and lighting in the front yard. A COA was issued for landscaping and landscape pavers, however, landscape lighting in the front yard requires Commission approval. Therefore, the applicant filed the above request separately.

**Proposed Landscape Lighting**

The applicant is proposing to install seven landscape lights in the front yard. There will be three different styles of fixtures with two different types of lighting (path lighting and up lighting). All three styles will be copper and will have low wattage light bulbs (11-20 watts per fixture). Up lighting will be used to highlight plants and path lighting will be used for ambience and visibility of landscaping and sidewalk.

**The Lockerbie Square Historic Area Plan**

The preservation plan does not make specific recommendations about yard lighting.

**Staff Analysis**

Staff believes that because the fixtures are small, inconspicuous and generally low level wattage, no negative impact should occur on the structure or surrounding properties. In addition, the lighting is within the confines of a small, fenced yard where they will be inconspicuous.

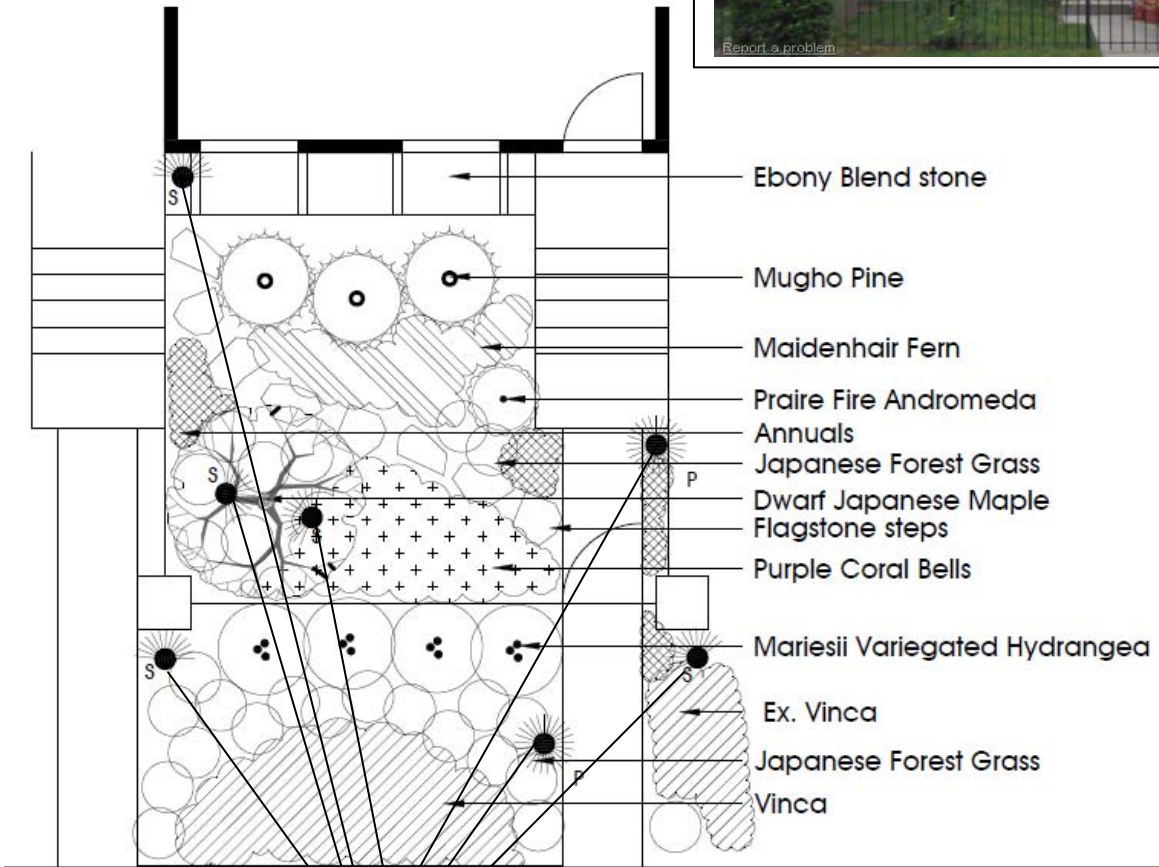
**STAFF RECOMMENDED MOTIONS**

**2010-COA-548 (LS):**

**To approve a Certificate of Appropriateness to install landscape lighting in the front yard (seven fixtures total) as per the submitted documentation and following stipulation:**

**Any changes to the submitted site plan or the proposed fixture types, locations or light source must be approved by IHPC staff prior to installation.**

**Staff Reviewer:** Meg Purnsley



Applicant is proposing seven fixtures in these locations. There will be three different styles of fixtures with two different types of lighting (pathlighting and uplighting).

