



The Comprehensive Plan for Marion-County, Indiana

Land Use Component

Area South Kentucky Avenue
Date Adopted: December 7, 2005

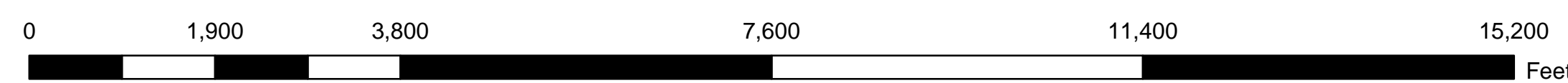
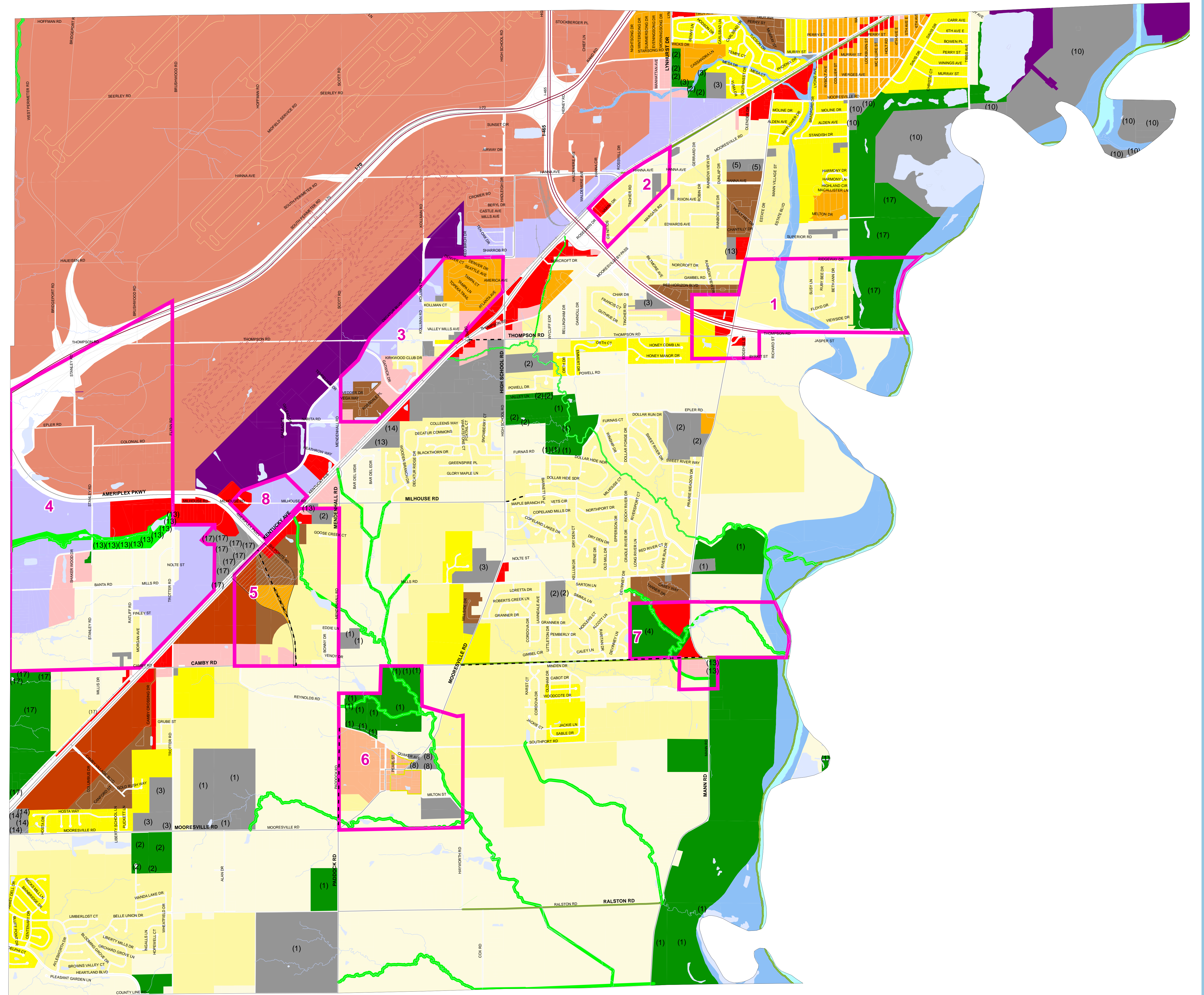
Area North of Kentucky Avenue
Date Adopted: December 6, 2006

Legend

- Excluded Cities
- Interstates
- Parcels
- Major Streets
- Streets
- Missing Thoroughfare Segments
- Streams
- Rivers
- Major Bodies of Water
- Airfield
- Proposed Third Runway
- Railroads
- Greenways and Paths
- West Newton Residential Areas
- Critical Areas

Recommended Land Use

- (1) 0 - 1.75 Residential Units per Acre
- (2) 1.75 - 3.5 Residential Units per Acre
- (3) 3.5 - 5 Residential Units per Acre
- (4) 5 - 8 Residential Units per Acre
- (5) 8 - 15 Residential Units per Acre
- (6) Over 15 Residential Units per Acre
- (7) Urban Mixed Use
- (8) Village Mixed Use
- (9) Airport Related Mixed Use
- (10) Park
- (11) Linear Park
- (12) Special Use
- (13) Office Commercial Uses
- (14) Community Commercial Uses
- (15) Heavy Commercial
- (16) Regional Commercial Use
- (17) Light Industrial
- (18) General Industrial
- Floodway



This map does not represent a legal document. It is intended to serve as an aid in graphic representation only. Information shown on this map is not warranted for accuracy or merchantability.