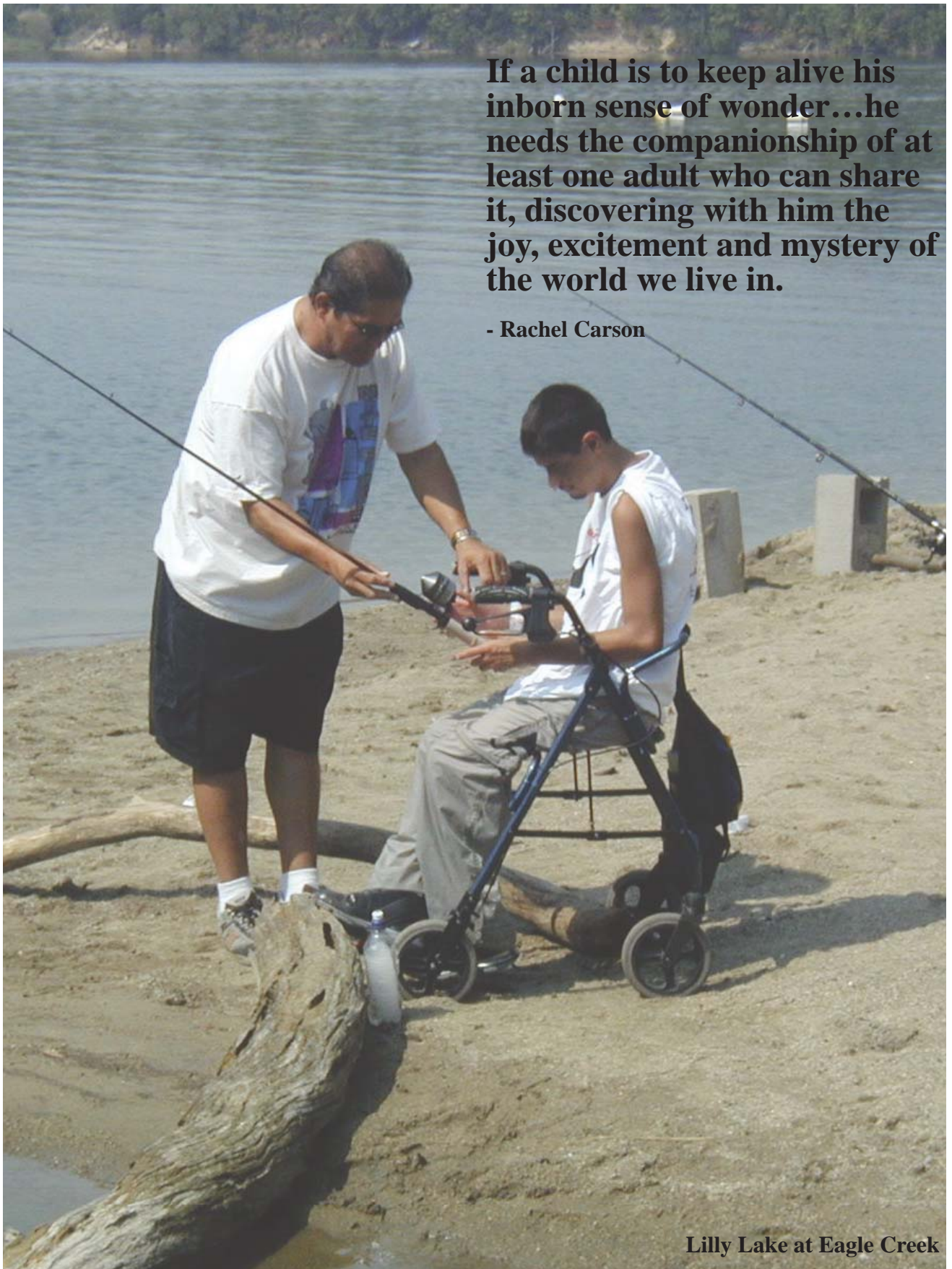


**If a child is to keep alive his inborn sense of wonder...he needs the companionship of at least one adult who can share it, discovering with him the joy, excitement and mystery of the world we live in.**

**- Rachel Carson**



Lilly Lake at Eagle Creek

# Universal Access

## UNIVERSAL ACCESS

In recent years, our Indy Parks has become more aware and sensitive to the needs of people with disabilities. "Future recreation programs and park facilities must emphasize accessibility and inclusion for all users, and de-emphasize the separation of user groups into categories based on ability" (Carter, Van Andel, Rob, 1995). The Department's philosophy is to create an environment that is the least restrictive possible. In doing this, we can improve the quality of life for all people within our community.

Indy Parks and Recreation is committed to helping people with disabilities participate at their optimal level of independence. We strive to provide services that focus on leisure-related skills, attitudes, and knowledge. The promotion of programs that improve social skills, self-awareness, and leisure skill development is also a key area of interest within our department. We do not want our participants to be involved in programs that just take up time. Our programs are designed and delivered with the intention of eliciting positive change in the individual.

Interestingly, the word recreation has an unlikely definition. As the dictionary states it is "the process of giving new life to something, or refreshing something, or restoring something." This of course is the whole person. Indy Parks and Recreation is invested in the holistic development of individuals with disabilities. It is our desire to provide a continuum of recreational services that offer a lifetime of benefits.

To support its wide range of events and programs, Indy Parks is making continuous improvements to its existing facilities. From bathhouse renovations and picnic shelter construction to playground replacement each of these projects is undertaken with universal accessibility in mind. Staff and hired professionals keep abreast of changes in the law and design practice to provide the best possible facilities for all. All construction, whether new or renovations, within the parks system is planned to, at a minimum, meet ADA requirements, and in most cases exceeds it. On the following pages is a sampling of just some of the design and capital projects completed in recent years, including details about how they address accessibility. Significant projects to point out would be the new Recreation or Family Centers and the Lilly Lake area

in Eagle Creek Park, which from their inception were planned as models of accessibility. It is Indy Parks intent that these projects will serve as usable demonstrations of how a parks facility should be designed.

A critical aspect of Departmental planning is the development of positive relationships with agencies in and outside of city government. In order to enhance the possibilities of inclusion for people with disabilities it is important that these relationships be established with agencies that serve such people. The following are examples of current partnerships that are yielding positive results.

- Rehabilitation Hospital of Indiana
- Hook Rehab Center
- Riley Hospital's Parent Information Center
- Indianapolis Power Soccer League
- National Disabled Sports Alliance
- American Camping Association
- Indianapolis Public Schools
- Mayor's Advisory Council on Disabilities
- Indiana University at Bradford Woods
- Indiana Soap Box Derby Association
- Indiana Pacers Wheelchair Basketball Team

Through these partnerships we have created dynamic programs such as the Kids Discovery Sports Day, Indianapolis Power Soccer League, Adaptive Soap Box Derby Races, Special Olympics, Outdoor Adventure Challenge Day, Adaptive Swimming Programs, RHI One Mile Race, Wheel Chair Basketball, and the 2004 Power Soccer World Invitational. In addition, the recognition of non-business relationships has also been identified as an important aspect of the Department's move to better serve people with disabilities.

In an effort to bring our community together to provide citizens with disabilities the best possible recreation experience Indy Parks has created the Citizen's Council on Recreation & Disabilities (CCRD). The purpose of the council is to provide the community with a forum to express their needs regarding accessible and inclusive recreation. The CCRD is also charged with the implementation and support of activity programming for people with disabilities. In addition, the council plays an active role in fund raising for the Therapeutic & Adaptive Recreation Section.

At the end of this section are three maps of Marion County that depict populations with disabilities.

# Universal Access

These maps serve as a tool, both for staff as well as the CCRD. It is useful for making decisions on where and how to offer programs geared for specific populations.

The combination of positive community relationships, accessible facilities, and innovative programs provides Indy Parks with a clear direction for the next five years. Future planning should concentrate on the development and implementation of the following areas.

- Creation of an internship program
- Expansion of summer camping opportunities
- Development of three competitive sports leagues
- Increased growth of the CCRD
- Development of cooperative programs with parks departments outside of Marion County
- Host future Power Soccer World Invitational
- Establish additional partnerships with community agencies
- Expand services to a broader range of community residents
- Continue progress on renovating and bringing up to standards, existing facilities. This can be accomplished through Indy Parks regular budgets,

grant opportunities and special donations.

“Recreation is characterized by feelings of mastery, achievement, exhilaration, acceptance, success, personal worth and pleasure” (Carter, Van Andel, Rob, 1995). From this perspective it becomes apparent that recreation is vital to the quality of life for all people. Examples like this clearly illustrate the therapeutic worth of recreational experiences. It is this thought that drives Indy Parks to provide people with disabilities consistent and appropriate opportunities to engage in activities that empower the individual to find value in their leisure lives.



Rhodus Park Playground

# Universal Access -Completed Projects

Project Type	Project Location	Project Description	Year	CIP
Aquatics	Bowman Park Water Spray Area -	Bid Construction for Spring 2005	2005	\$ 165,140
Aquatics	Eagle Creek Beach Ramp	Install ADA ramp to access beach (Stone's Contracting)	2005	\$ 7,025
Aquatics	Ellenberger Park - Pool Filters & Baby	Prepare Scoping report for pool filters and baby pool	2005	\$ 1,200
Buildings	Taggart Memorial - Restoration	Develop a Scoping Document	2005	\$ 51,240
Sitework	Holiday Park - Playground	Purchase and Install in-house Playground (RFP Opens 10/7/05)	2005	\$ 60,000
Buildings	Lilly Project - Bethel - Design	Design & Inspection fees and As-Built Drawings	2005	\$ 31,340
Buildings	Lilly Project - Bethel - Design	Contract correction to P.O.	2005	\$ 693
Buildings	Lilly Project - Eagle Crk - Earth Discovery Center - Construction Completion 9/1/06	Construction	2005	\$ 1,072,169
Buildings	Lilly Grant - Garfield Park Art Center - Construction -M.D. Rowe - C O # 1	Renovation of Garfield Arts Center & Site Work	2005	\$ 63,652
Buildings	Garfield Arts Center Center	Install footer drain, interior basement floor-Arts Center, reomve and replace	2005	\$ 44,244
Buildings	Garfield Arts Center Center	Install interior basement flooring	2005	\$ 13,822
Buildings	Lilly Project - Rhodius	add ADA grab bars, replace existing sidewalk, add framing changes in multi- purpose room	2005	\$ 6,491
Buildings	Lilly Project - Washington Park -	Install Cable into the building - Cable for Library Partnership	2005	\$ 4,000
Greenways/Trails	Broad Ripple Canal - Construction	Install new sidewalk & North Bank Erosion Control South of Guilford	2005	
Greenways/Trails	Eagle Creek Trail -Gradex, Inc. C.O. # 2	Remove unstable trail soil and replace with compacted stone, additional site work at wood stream drive	2005	\$ 9,259
Sitework	Eagle Creek Trail -Gradex, Inc./Youth Soccer Complex-Phase I - C.O. # 3	Grading of side ditches, reseeding of turf and meadow w/erosion blanket	2005	\$ 40,925
Greenways/Trails	Fall Creek Trail - 56th Street to Skiles Test Park - (May 25 Bid by State)	Trail Construction	2005	\$ 32,000
Greenways/Trails	Pennsy Trail Corridor - Design Development	Contract with Storrow Kinsella for Design	2005	\$ 75,500
Aquatics	M.L. King Park- UPARR Grant - Dawson Inc.	Bathhouse Repair	2005	\$ 154,981
Aquatics	M.L. King Park- UPARR Grant - A2SO4 Amendment NO 2	Additional design work for parking lot, deck replacement from Construction CO # 1	2005	\$ 15,084
Aquatics	M.L. King Park- UPARR Grant - Match	Renovation of Parking Lot	2005	\$ 55,900
Sitework	Broad Ripple Boat Ramp Construction	Install boat dock, bank stabilization measures	2005	\$ 180,000
Sitework	Broad Ripple Boat Ramp Design	Design boat ramp and bank stabilization	2005	\$ 41,650
Sitework	Marott Park - IDEM - Grant Parking Lot - Design	Design of College Ave. Parking Lot	2005	\$ 12,850
Sitework	Marott Park - IDEM - Grant Parking Lot - Construction	Construction of College Ave. Parking Lot	2005	\$ 59,992
Sitework	MLK King Park Memorial Lighting	Installation of memorial lighting	2005	\$ 26,000
Sitework	Southwestway LWCF Grant Trail - CO # 1	Installation of gravel trail to meet LWCF Grant commitment. Extra stone is required due to wet soils and drainage issues.	2005	\$ 7,797
Sitework	Carson Park-Parking Lot	Stripping Carson Park & Southwestway parking lot	2005	
Aquatics	Aquatics Signage Package	Design & Install New Signage for Aquatic Centers	2006	\$ 32,500
Aquatics	Bowman Park Spray Area	Increase piping size in water meter vault	2006	\$ 1,500
Aquatics	Bowman Park Spray Area	Additional design services to lower spray area elevation	2006	\$ -
Aquatics	Clayton & LaSalle Sprayground	Six water spray features with appropriate concrete surface drains & water meter	2006	
Aquatics	Eagle Creek Beach Access Ramp	Pay Tiger Const. for Ron Stone default on contract.	2006	\$ -
Aquatics	Veolia - Broadway & 61st St.-	Renovate drainage of Water Spray Ground	2006	
Aquatics	Ellenberger Pool Filter & Baby Pool Construction	Design and prepare construction documents	2006	\$ 39,000
Buildings	Lilly Project - Eagle Creek - Earth Discovery Center	C.O. # 1 - Remove poor soil & add 400 sq. yd. Heavy duty asphalt	2006	\$ 3,069
Buildings	Lilly Project - Eagle Creek - Earth Discovery Center	C.O. # 2 - Grading and Asphalt pathway to pond,	2006	\$ 19,748
Buildings	A.D.A SIGNAGE FOR MLK PARK PARKING LOT	2 HANDICAP SIGNS AND 2 VAN ACCESIBLE SIGNS ON 2 POSTS	2006	



**Rhodius Park**

# Completed Projects - Universal Access

Project Type	Project Location	Project Description	Year	CIP
Buildings	Riverside Marina - Kitchen Design &	Design and Install new counters, stove, sink and frig. & awning	2006	\$ 40,815
Buildings	Riverwood Park - Old White River	Raze and remove concession stand behind The White river school	2006	
Buildings	Roof Construction - Perry & Thatcher Park Pre-investigation design fees	Investigate existing conditions of buildings to determine a fee proposal and extent of repairs needed.	2006	\$ 9,800
Buildings	Taggart Memorial Renovation	Memorial Renovation Const. Docs	2006	\$ 38,100
Greenways/Trails	Fall Creek from 56th Street to Skiles Test Park	Ammendment No. 1 to inspection service contract	2006	\$ 57,935
Greenways/Trails	Monon Bridge over White River	Paint Handrail on Monon Bridge over White River	2006	\$ -
Greenways/Trails	Monon Bridge over Fall Creek Parkway	Paint Fall Creek & Broad Ripple Bridge	2006	\$ 45,000
Greenways/Trails	Monon Bridge over Fall Creek Parkway	Paint Fall Creek & Broad Ripple Bridge ( XCO #1)	2006	\$ 2,125
Greenways/Trails	Monon Trail - 64th St. to 86th St.	Replenish gravel edge along trail	2006	\$ 32,000
Greenways/Trails	Penny Trail Corridor - Design & Construction	Prepare construction documents and IDOT match	2006	\$ 151,713
Greenways/Trails	Penny Trail Corridor - Real Estate Services	Prepare legal and parcel documents for land acquisition use as IDOT match	2006	
Greenways/Trails	Fall Creek Greenway Trails	construction Fall Creek Trail Uppper Fall Creek Greenways Trail Phase Two	2006	\$283,055.00
Sitework	Broad Ripple Boat Ramp (Grant \$182,000)	Renovate and replace boat dock	2006	\$ 8,839
Sitework	Broad Ripple Boat Ramp C. O. # 1	Remove concrete and stumps from sloping embankment, backfill with top soil to establish planting media	2006	\$ 23,375
Sitework	Eagle Creek Park Marina Lighting	Install lighting near docks for night programs	2006	\$ 4,320
Sitework	Eagle Creek Park - Discovery center	Purchase of new dell optiplex for the Discovery center	2006	\$ 869
Sitework	Holiday Park - Playground Installation	Install Toddler and 7-12 yr. old playground	2006	\$ 98,600
Sitework	Holiday Park - Playground Installation CO#1	Additional layout, toadstools installation, ramp connection, curb cut, add volcano climber, remove fence panels and reinstall	2006	\$ 19,573
Sitework	Holiday Park - Playground Purchase	Purchase Miracle Tower Slide	2006	\$ 75,000
Sitework	Holliday Park - Repair Ganite	Move electrical and mechanical equipment into Center	2006	\$ 16,340
Sitework	IDEM - Bertha Ross, Hawthorne, Pride	Renovate basketball courts surfaces using crumb rubber	2006	\$ 81,105
Sitework	IDEM - Brookside & Thompson Park Basketball Courts	Pave and stripe two full courts and one 1/2 court	2006	\$ 57,366
Sitework	IDEM - Brookside & Thompson Park Basketball Courts	XCO #1 - Herbicide treatment and fine grading and compacting of the existing stone.	2006	\$ 4,770
Sitework	IDEM - Douglass, Denver & Fall Crk. & 30th Park Basketball Courts -	Renovate existing courts	2006	\$ 145,500
Sitework	IDEM - Marott Park - Crumb Rubber Grant	Install a new parking lot of College Ave	2006	\$ 12,626.90
Sitework	IDEM - Purchase 14 Basket Ball	Backboards for Courts	2006	\$ 19,586
Sitework	Juan Solomon - Bridge	Purchase Trail Bridge with Parks Foundation	2006	
Sitework	M L King Park - UPARR Grant	Parking lot sealing and access ramp	2006	\$ 7,875
Sitework	Raymond Park - Shelter	Purchase of pre-made shelter	2006	\$ 13,642
Sitework	Resin Flooring Installation - Krannert Park	Removing and Replacing with Resinous Epoxy Flooring in Locker Rooms	2006	\$ 18,100
Sitework	Thompson Park - Swings	Purchase accessible swing with Franklin community School	2006	\$ 1,000
Aquatics	Douglass Spray pool area	XCO #2 - Renovation of spray pool	2007	\$ 2,503
Aquatics	Ellenberger Pool Filter & Baby Pool Construction	Purchase & Install Spray pool	2007	\$ 604,400
Buildings	Eagle Creek Park - Earth Discovery	Murphy Catton Inc. Habitat Discovery Lab Schematic & Design Development -	2007	\$ 132,413
Buildings	Garfield Park Conservatory	Replace Conservatory flooring	2007	
Buildings	Garfield Park & Krannert Park	Men's and Women's - Floor coverings grout coat and clear coat	2007	\$ 24,978
Buildings	Kuntz Administration Building	Repair Car Damage to building front entrance	2007	\$ 9,946
Buildings	Thatcher Park - Resurfacing floor	Paint locker room floor @ Thatcher Family Center	2007	\$ 15,000
Buildings	Windsor Village - Family Center	Indy Parks match to Indpls. Parks Foundation - Community Center Est. Cost	2007	\$ 1,184,701
Greenways/Trails	Pleasant Run Trail	Big Belly Compaction System	2007	\$ 3,795



**Lilly Lake  
at Eagle Creek**

# Universal Access -Completed Projects

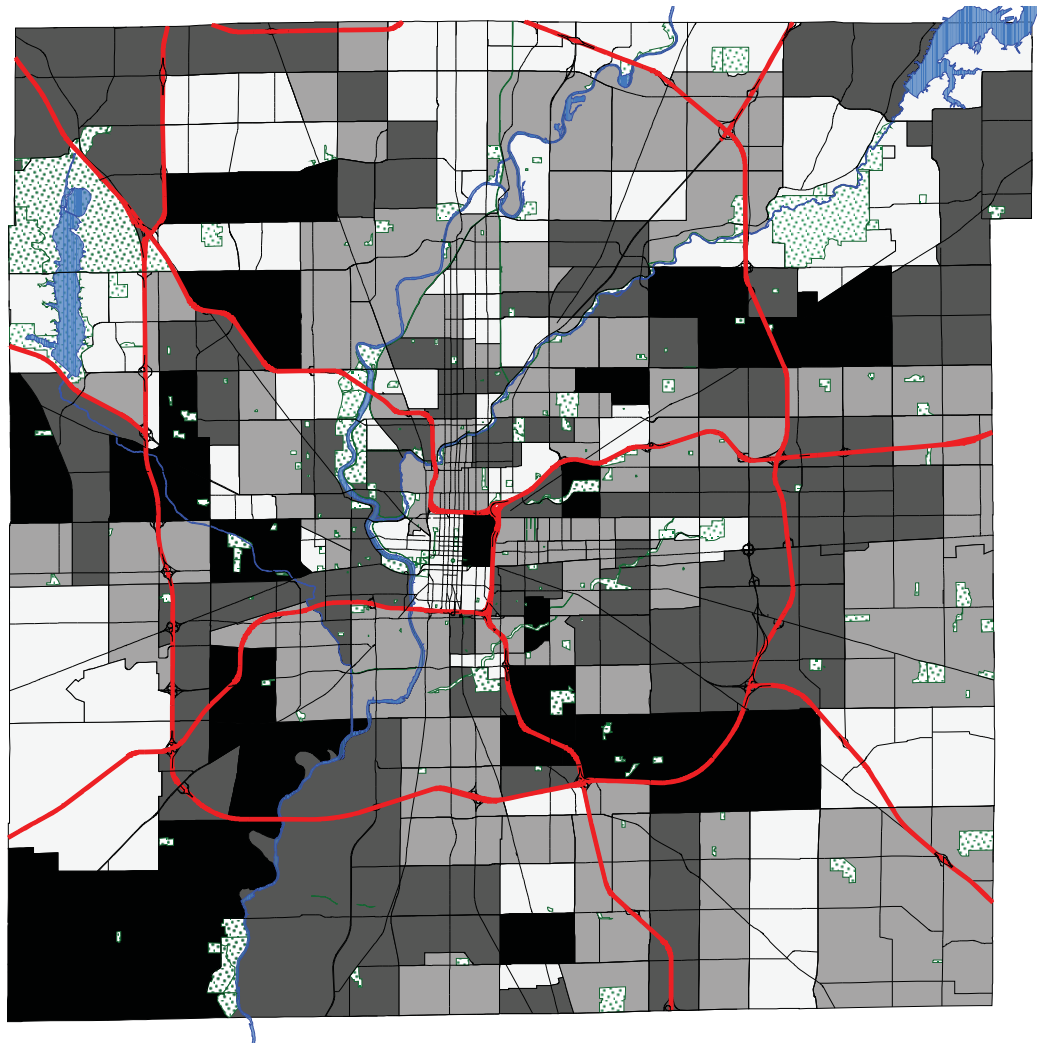
Project Type	Project Location	Project Description	Year	CIP
Greenways/Trails	Fall Creek Greenway Trail	Fall Creek Trail Upper Fall Creek Greenways Trail Phase Two	2007	\$ 68,655
Greenways/Trails	Fall Creek Trail at Skiles Test Park - Benches	Purchase of 4 Concrete park benches for Skiles Test Park	2007	\$ 1,540
Greenways/Trails	Monon and Fall creek	Monon and Fall Creek - Trail Asphalt Repair	2007	\$ 6,825
Greenways/Trails	Highway Signs for the Monon trail	ASI SIGN SYSTEMS to provide signs for the Monon Trail	2007	\$ 3,420
Sitework	Acton Park	Design and Install parking lot -	2007	\$ -
Sitework	Basswood Park - Donation from	Install Shelter per Master Plan Recommendation for Improvement	2007	\$ 6,777
Sitework	Christian Park	Renovate football field, bleaches, drainage, irrigation, ADA walks, scoreboard	2007	\$ 74,220
Sitework	Eagle Creek Park - Marina	Eagle Creek Dock Repair	2007	\$ -
Sitework	Paul Ruster - Kiosk Information Panel	Information Panel and display Kiosk	2007	\$ 2,395
Sitework	Playgrounds Fibar Surfacing	Keramida Environmental, Inc. - Remove two soil piles per IDEM requirement	2007	\$ 63,928
Sitework	Playgrounds Fibar Surfacing	Install Fibar Surfacing at new Playgrounds	2007	\$ 19,930
Sitework	Rev. Mozel Sanders - IPS Sch. 63	Purchase playground	2007	\$ 140,124
Sitework	Rev. Mozel Sanders - IPS Sch. 63	Installation of Playground	2007	\$ 26,456
Sitework	Rhodium Park - Allstate Playground	Purchase of shelter	2007	\$ 10,461
Sitework	Rhodium Park - Allstate Playground	Little Tikes purchase of equipment - Sole source vendor	2007	\$ 30,203
Sitework	Rhodium Park - Allstate Playground	Little Tikes to Install Playground Equipment & Surface - Service only	2007	\$ 59,600
Sitework	Rhodium Park - Allstate Playground	Allstate Little Hands Playground Project	2007	\$ 68,117
Aquatics	Clayton & LaSalle Park	Install new water spray ground	2008	\$ 60,004
Aquatics	Centennial & Groff park spray area	Replacing Spray features - BOLLARD ACTIVATOR & COIL-SOLENOID	2008	\$ 2,959
Aquatics	Ellenberger Sprayground	Install new sprayground features	2008	\$ 71,700
Aquatics	Rhodium & Riverside bath house	Toilet partition @ Rhodium & Riverside bath house	2008	\$ 5,584
Aquatics	Washington Park Spray Area	Washington Park Spray area - Reconfigure and rewire the existing CPU	2008	\$ 2,146
Buildings	Douglass Park Recreation Center	Scoping Document for Building Repairs and Improvments	2008	\$ 12,500
Buildings	Eagle Creek Earth Discovery Center	Purchase and Install Audio quipment and Exhibits	2008	\$ -
Buildings	Eagle Creek Ornithology Building	Purchase and Install Carpet	2008	\$ 20,186
Buildings	Eagle Crk Park - Admin Bldg.Steps &	Replace front entrance walk and steps to meet ADA Accesibility standards	2008	\$ 11,350
Buildings	Eagle Creek Park - Marina	Restrooms ADA Accesibility	2008	\$ 15,000
Buildings	Ellenberger Park Ice Rink	Professional Analysis of Ellenberger's & Perry Ice Arena Operation	2008	\$ 9,500
Buildings	Riverside Marina - Awning	Design and Install new awning over dining area & renovate kitchen	2008	\$ 142,450
Buildings	Riverside Park - Iron Skillet Flooring	Replace Flooring and Beams in Kitchen Area	2008	\$ 11,662
Buildings	Rhodium Community Center	Balance due to pay Pyramid construction	2008	\$ 42,403
Buildings	Thatcher Park - Roof CO # 1	Reforce decking, stop additional corrosion and repair electrical conduit	2008	\$ 4,549
Buildings	Windsor Village Park	Windsor Village - Game Equipments for the family center	2008	\$ 3,150
Buildings	Windsor Village Park	Windsor Village - Game Equipment (Tennis Table) for the family center	2008	\$ 1,050
Golf	Smock Golf Entrance	Pave Entrance off Southport Road	2008	\$ -
Greenways	Canal Tow-path Trail	Grade and Roll Trail Surface	2008	\$ 4,200
Greenways	Fall Creek Trail North Canoe Launch	Replace damage Trail Sign	2008	\$ -
Greenways	Monon Trail Pavement Repair	Repair Pavement between 91st and 96th Street due to root damage.	2008	\$ -
Greenways	Monon Trail	Monon Trail Blue Box repair	2008	\$ 665
Greenways	Pennsy Trail	Design Services for trail from Arlington Ave to Shortridge Road	2008	\$ -
Greenways	Pennsy Trail	Develop 1.3 mile trail from Arlington Ave to Shortridge Road	2008	\$ 212,510
Greenways	South White River from Zoo to Raymond St.	Construct Trail	2008	\$ 199,630
Sitework	Brookside Park - Doors	REPAIR FIVE (5) PANIC DEVICES WITH NEW PARTS, ADJUST DOORS	2008	\$ 1,294
Sitework	Eagle Creek Park	Two boat docks at the 42nd street ramp at Eagle Creek	2008	\$ 46,120
Sitework	JF Gaines Park	Install Basketball Court and site improvements	2008	\$ 88,600
Sitework	Garfield Park - Bridge Design	Design bridge Friends to pay for bridge installation	2008	\$ 13,500
Sitework	Hanover Playground	Slide chute for Hanover north	2008	\$ 2,256
Sitework	Krannert Park - door repair	Door replacement @ Krannert Family center	2008	\$ 8,725
Sitework	Wood Fiber Material Testing	testing on one type/thickness of loose fill wood fiber material according to ASTM	2008	\$ 6,302
Sitework	Playground - Rhodium Park	Purchase picnic tables as part of last year project.	2008	\$ -
Sitework	Playground - Rhodium Park	Purchase 7 benches and 2 trash containers	2008	\$ -
Sitework	Playground - Stout field & Morland	Replacement Playground Parts	2008	\$ 3,074
Sitework	Playground - Windsor Village Park	Purchase of playground	2008	\$ 163,751



**Lilly Lake  
at Eagle Creek**

## Population with Physical Disability

### Marion County, Indiana



- Major Streets
- Interstates
- Major Thoroughfares
- Primary Arterial Streets
- Rivers
- Parks
- Persons with Physical Disabilities
- 0 - 202
- 202 - 340
- 340 - 515
- 515 - 794

1 0 1 2 3 Miles



February 5, 2004

Produced By: DPR Planning

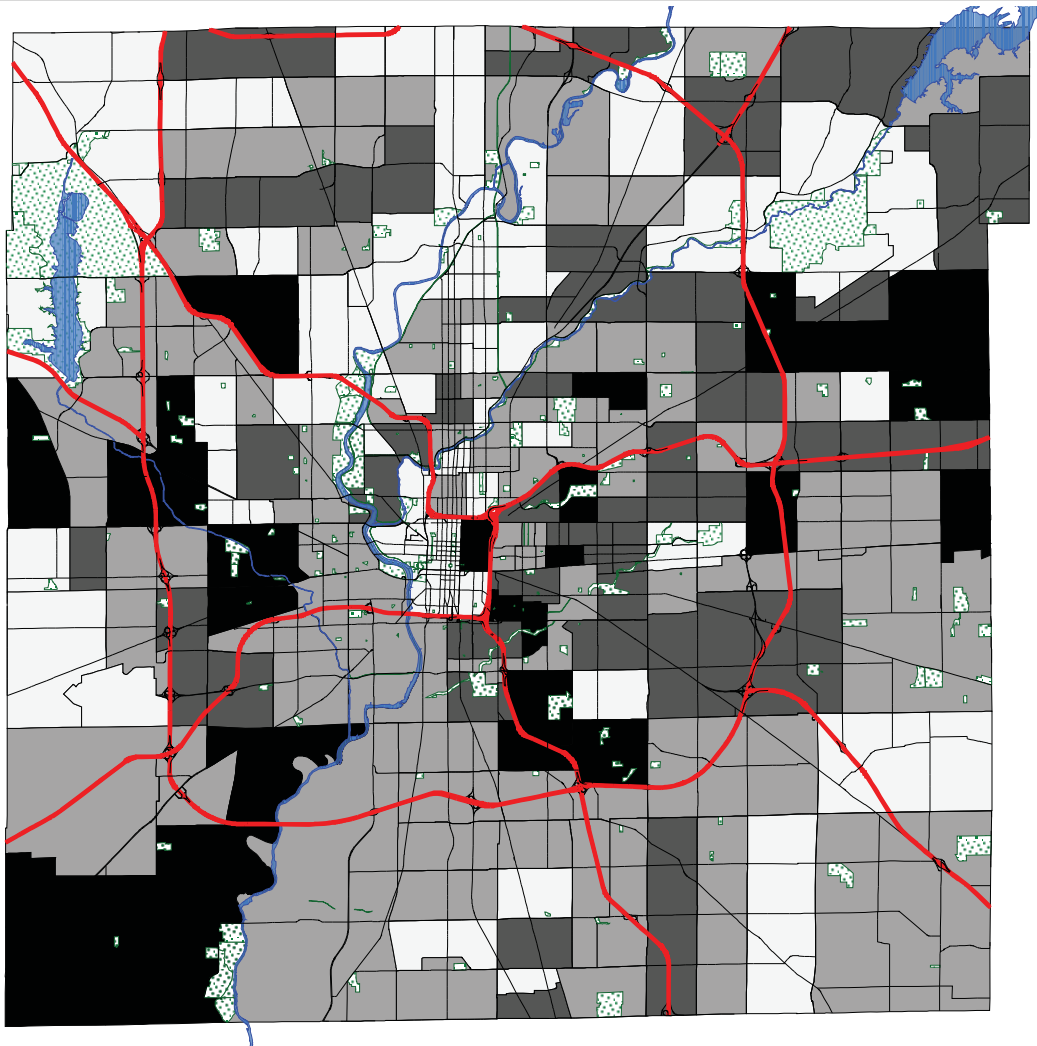
Data Source: The City of Indianapolis  
Geographic Information Systems



This map displays the fact that individuals with physical disabilities, as defined in the 2000 United States Census, are spread more or less evenly throughout the entire county. These findings support our broad ranging efforts to bring all existing facilities up to ADA code when possible and abide by ADA code requirements when building all new facilities. Closer in-

spection reveals significant concentrations in Decatur and Franklin Townships. These areas are currently underserved in terms of park acreage, so ADA accessible facilities seem especially needed here. Potential exists at both Southwestway Park and Franklin Community Park to meet these needs.

## Population with Cognitive Disabilities Marion County, Indiana



- Major Streets
- Interstates
- Major Thoroughfares
- Primary Arterial Streets
- Rivers
- Parks
- Persons with Cognitive Disabilities**
- 0 - 111
- 111 - 199
- 199 - 314
- 314 - 498

1 0 1 2 3 Miles



February 5, 2004

Produced By: DPR Planning

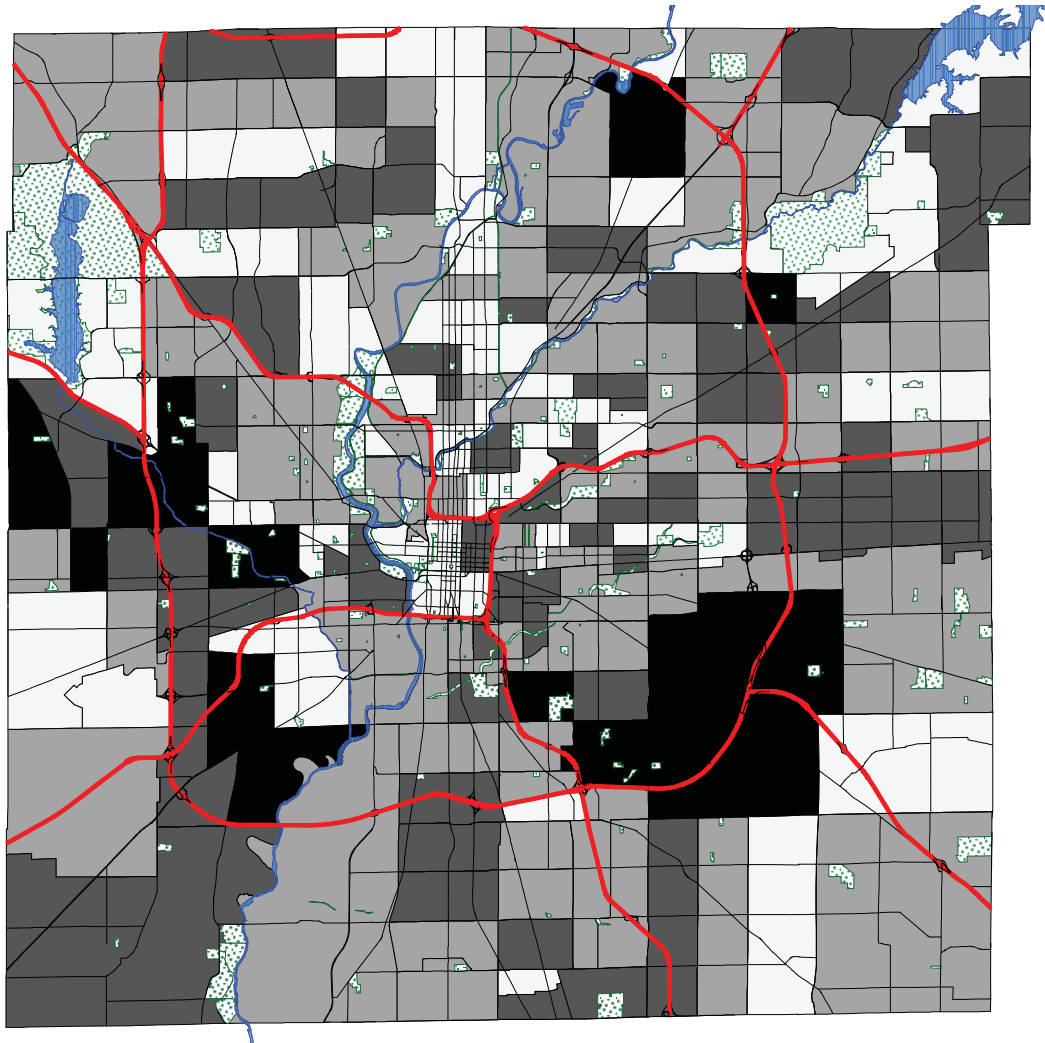
Data Source: The City of Indianapolis  
Geographic Information Systems



This map displays the distribution of individuals with Cognitive disabilities, as defined in the 2000 United States census, throughout the county. Two major concentrations seem especially significant, in Decatur and the border of Lawrence and Warren townships. Outreach to people with cognitive disabilities

is typically handled through specific programs. Both of these areas lack appropriate centers to house such programs, so analysis of this map shows areas doubly in need. There is potential at both Southwestway Park and in the Community Alliance of the Far East-side (CAFE) neighborhood to provide facilities to meet these program needs.

## Persons with Sensory Disabilities Marion County, Indiana



- Major Streets
- Interstates
- Major Thoroughfares
- Primary Arterial Streets
- Rivers
- Parks
- Persons with Sensory Disabilities
- 0 - 87
- 87 - 153
- 153 - 244
- 244 - 406

1 0 1 2 3 Miles

February 5, 2004

Produced By: DPR Planning

Data Source: The City of Indianapolis  
Geographic Information Systems



This map displays the distribution of individuals with Sensory disabilities, as defined in the 2000 United States census, throughout the county. Since sensory disability can encompass a broad range of challenges, Indy Parks facilities need to include ADA elements as well as provide programming to meet peoples needs.

The distribution of individuals with these needs is spread throughout the county, with the largest concentration appearing on the near southeast side, showing a significant need for an adequate Recreation Center with programmed activities. Park facilities in this area include Christian, Bethel and Raymond Parks.

# Universal Access



Lilly Lake at Eagle Creek