

MARION COUNTY 2002 ANNUAL BUDGET

COMMUNITY PROFILE

Original Charter	1821
Marion County was created on December 31, 1821 and named in honor of the Revolutionary War General, Francis Marion. A year earlier, the Indiana General Assembly had selected the area as the new location for the state capital.	
Present Charter Adopted (UNIGOV)	1969
Form of Government	County Executive-Council
County Seat	Indianapolis
Area (Square Miles)	402
Land Area (Square Miles)	356
Population (Marion County) ¹	860,454 (2000 Census)

Major Attractions

Professional Sports:

Indianapolis 500 Race	IRL (Indy Racing League)
Brickyard 400 Race	NASCAR
U.S. Grand Prix	Formula 1
Indianapolis Colts	NFL
Indiana Pacers	NBA
Indianapolis Indians (Baseball)	International League
Indianapolis Ice (Hockey)	IHL
Indiana Fever	WNBA
Indiana Firebirds	Arena Football

Arts & Museums:

- Indianapolis Museum of Art
- Indianapolis Children's Museum
- Indianapolis Artsgarden
- Eiteljorg Museum of American Indians and Western Art
- Madame Walker Urban Life Center and Theater
- Indiana Repertory Theater
- Indianapolis Symphony Orchestra
- Indianapolis Ballet Theater
- NCAA Hall of Fame
- White River State Park and Botanical Gardens

¹ Source: U.S. Dept. of Commerce, Bureau of Census

MARION COUNTY 2002 ANNUAL BUDGET

DEMOGRAPHICS

Population by Age:¹

	<u>2000</u>	<u>1990</u>	<u>1980</u>
0-19	244,709	225,016	244,042
20-44	346,047	338,728	290,450
45-64	174,184	140,594	151,443
65 and over	<u>95,534</u>	<u>92,821</u>	<u>79,298</u>
Total	860,454	797,159	765,233

Population Trend:¹

2000	860,454
1999	810,946
1990	797,159
1980	765,233
1970	793,769
1960	697,567
1950	551,777
1940	460,926

The late 1970's and early 1980's witnessed a net out-migration of residents to the county's surrounding Marion/Indianapolis. This is the so called "doughnut" effect where major growth was occurring in the suburbs and the inner cities began to decline. Significant investment in infrastructure and Indianapolis' emphasis on sports as a development tool has dramatically lead to a "rebirth" of the central region.

Number of Households by Income Level:

	<u>1999²</u>	<u>1996</u>	<u>1993</u>	<u>1990</u>
Under \$10,000			32,603	46,803
\$10,000-\$19,999	79,970	88,537	47,963	61,297
\$20,000-\$34,999	75,954	81,855	75,236	82,433
\$35,000-\$49,999	62,570	63,813	63,951	54,050
Over \$50,000	<u>116,106</u>	<u>99,896</u>	<u>93,732</u>	<u>53,371</u>
Total Households	334,600	334,100	313,485	297,954

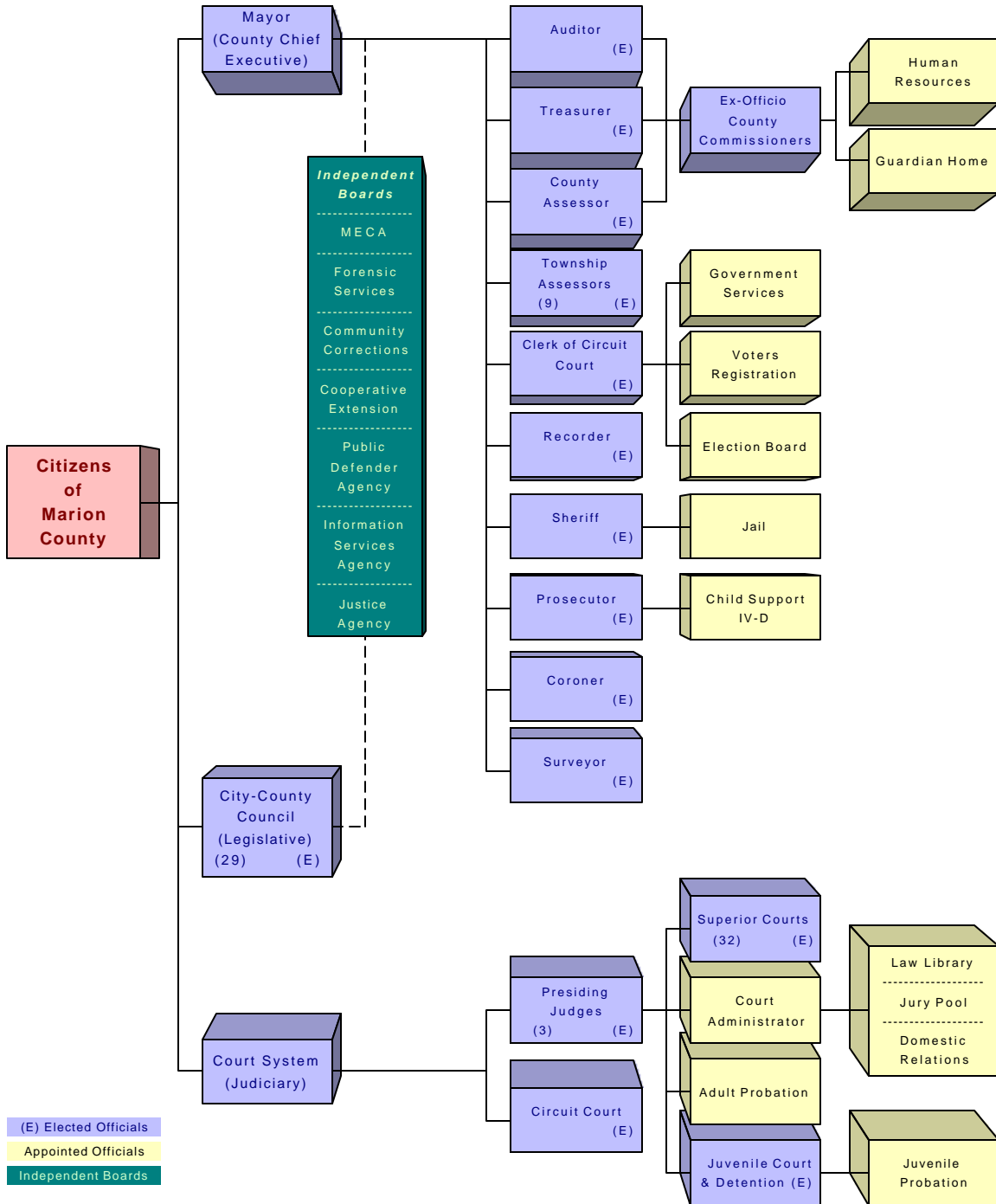
¹ Source: U.S. Dept. of Commerce, Bureau of Census

² Source: Sales and Marketing Management Magazine (1996 – 1999 first two categories combined)

MARION COUNTY 2002 ANNUAL BUDGET

MARION COUNTY ORGANIZATION CHART

Marion County, Indiana Government Organization Chart



MARION COUNTY 2002 ANNUAL BUDGET

ECONOMIC INDICATORS

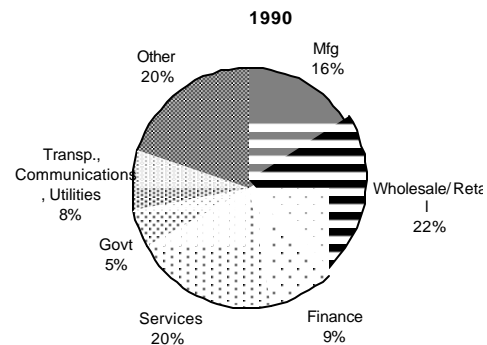
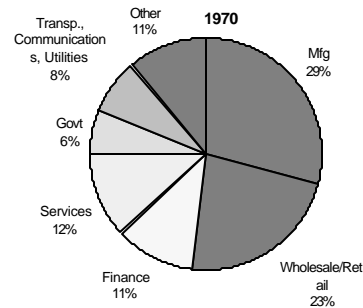
Per Capita Income

Year	National	State	Marion County
1999	\$ 28,546	\$ 26,157	\$ 30,685
1998	27,321	25,163	28,851
1997	25,288	23,202	26,577
1996	24,164	22,234	25,420
1995	23,059	21,427	24,774
1994	21,050	20,261	23,465
1993	20,801	19,219	22,357
1992	19,841	18,043	21,430
1991	19,092	17,179	19,863
1990	18,691	16,890	19,148
1989	17,596	15,779	17,730
1988	16,489	14,924	16,662
1987	15,472	13,987	15,618

Distribution of Earnings by Industry 1990

The graphs illustrate the degree of diversification that occurred in Marion County from 1970 to 1990. Marion County was very dependent on manufacturing for 29% of total earnings in 1970. By 1990 growth in services industries had grown from 12% to 20%. "Other" includes health care and has grown from 11% in 1970 to 20% in 1990. Manufacturing however, fell to only 16% of the total earnings.

This degree of diversification significantly protects the local economy from recessionary pressures. This also leads to slower but steadier growth.



MARION COUNTY 2002 ANNUAL BUDGET

ECONOMIC INDICATORS (CONTINUED)

Principal Taxpayers and Employers¹

<u>Firm</u>	<u>Business</u>	<u>Assessed Value²</u>	<u>Employees</u>
Eli Lilly & Co.	Pharm./Mfg.	\$239,734,970	9,503
Indpls Power & Light	Utility	129,183,550	1,577
Allison Engine Co.	Mfg.	72,770,550	3,985
Citizens Gas & Coke	Utility	62,427,340	819
Ford Motor Co.	Mfg.	53,123,825	2,869
General Motors Corp.	Mfg.	50,018,580	2,814
Indpls. Water Co.	Utility	42,731,620	207
Bank One Corp.	Banking	36,992,927	2,658
Navistar International	Mfg.	34,481,030	2,542
Roche	Mfg.	31,907,070	860
Marsh	Retail/Grocers	29,920,400	3,492

Other Principle Employers³:

United States Government	14,900
Indiana State Government	27,300
Indianapolis/Marion County Government ⁴	12,297

	<u>2000</u>	<u>1999</u>	<u>1998</u>	<u>1997</u>
Total Employment				
U.S. (in thousands)	141,354	133,488	131,463	129,558
Indiana (in thousands)	3,071	2,984.6	2,992.7	2,977.9
Marion Co. (in thousands)	439.24	435.89	440.7	434.65

Unemployment Rates⁵

U.S.	4.5%	4.2%	4.5%	4.9%
Indiana	3.4%	3.0%	3.1%	3.5%
Marion County	2.7%	2.8%	2.8%	3.2%

Indianapolis Industrial Activity Index
(1977 = 100, SA)

225.77

¹ Source: City of Indianapolis Controller's Office

² March 1, 1998 valuations for taxes due and payable in 1999.

³ Source: Indiana Dept. of Workforce Development (Dec. 1999)

⁴ Entities reporting to the City-County Council

⁵ Source: Indiana Dept. of Workforce Development (1999)

MARION COUNTY 2002 ANNUAL BUDGET

ECONOMIC INDICATORS (CONTINUED)

Selected Economic Trend Data		Retail <u>Sales (000's)¹</u>	Building <u>Permits²</u>	Construction <u>Value²</u>
	2000	N/A	37,175	\$2,364,376,370
	1999	N/A	37,026	1,956,031,977
	1998	12,569,922	38,114	1,845,017,605
	1997	9,987,507	38,567	1,199,898,149
	1996	11,073,237	38,290	1,070,886,493
	1995	10,562,522	39,203	1,339,263,435
	1994	9,488,537	43,057	1,241,255,590
	1993	9,509,821	40,174	1,241,856,194
	1992	8,917,228	40,850	1,144,402,196
	1991	8,784,409	38,961	794,369,405
	1990	8,902,722	42,837	1,283,528,786

Tax Base & Taxes Collected Trend		Assessed Values of Real & Personal <u>Property</u>	Property Tax Levied <u>(General Fund)</u>	Local Income <u>Tax Collected</u>
	2000	\$9,082,244,677	\$87,052,693	\$26,845,506
	1999	8,882,483,711	83,179,236	26,428,530
	1998	8,731,580,078	82,819,037	24,682,748
	1997	8,329,868,587	77,359,490	23,344,486
	1996	8,007,857,930	75,105,700	22,588,575
	1995	7,351,394,300	69,830,894	21,776,144
	1994	7,209,338,210	65,677,071	21,182,543
	1993	7,095,625,140	63,881,913	20,010,105
	1992	6,857,209,980	52,066,795	20,663,609
	1991	6,585,139,750	49,586,102	20,140,012
	1990	6,470,912,770	50,576,654	19,746,829

¹ Source: Indiana Dept. of Revenue (determined by the amount of sales tax collected in Marion County)

² Source: City of Indianapolis, Dept. of Metropolitan Development

MARION COUNTY 2002 ANNUAL BUDGET

MISCELLANEOUS STATISTICS

Major Universities in Marion County:	<u>Enrollment</u>
Indianapolis Univ.-Purdue University at Indianapolis (I.U.P.U.I.)	25,961
Butler University	4,126
University of Indianapolis	4,000
Marian College	1,414
Ivy Technical College	8,236

Last General Election:	November 7, 2000
Registered Voters in Marion County	550,615
Votes Cast	273,486
Percentage	49.7%

General Obligation Bond Ratings:

Moody's Investors Service	AAA
Standard & Poor's	AA+
Fitch Investors Service	AAA

MARION COUNTY 2002 ANNUAL BUDGET

GLOSSARY

A.D.P.I.C.S.	Advanced Purchasing and Inventory Control System. A KPMG mainframe computer program used to process acquisitions and purchase orders.
Ad Valorem Taxes	Commonly referred to as property taxes, are levied on both real and personal property according to the property's valuation and the tax rate.
A. D. & S.	Alcohol and Drug Services. A special revenue fund where specific court ordered fines are deposited and used to support substance abuse and criminal justice programs.
Appropriation	A legal authorization to incur obligations and to make expenditures for specific purposes.
Assessed Valuation	The valuation set upon real estate and certain personal property by the assessor as a basis for levying taxes. In Indiana, assessed value is 1/3 of the equalized estimated true tax value.
Base Budget	Cost of continuing the existing levels of service in the current budget year.
BPREP	Budget Preparation system. A KPMG mainframe application used to prepare annual budgets.
Budget	A plan of financial activity for a specified period of time indicating all planned revenues and expenses for the budget period.
Budgetary Basis	This refers to the basis of accounting used to estimate financing sources and used in the budget. This generally takes one of three forms: GAAP, cash, or modified accrual. Budgets in Indiana are primarily prepared on the cash basis.
Budget Calendar	This refers to the schedule of key dates which a government follows in preparation and adoption of the budget.
Budgetary Control	The control or management of a government in accordance with the approved budget for the purpose of keeping expenditures within the limitations of available resources and appropriations.
Capital Assets	Assets of significant value having a useful life of several years. Also referred to as fixed assets.
Capital Budget	Appropriations funded primarily from bond proceeds or operating revenues for improvements to facilities and infrastructure. The county also has Cumulative Capital Development Fund which is established for three year periods to address certain capital needs of the county.
Capital Outlay	Fixed assets with a value of \$300 or more and a useful economic life more than one year. Also, assets of value which must be controlled for purposes of recording as fixed assets. Recognized in Indiana as Character 4.

MARION COUNTY 2002 ANNUAL BUDGET

GLOSSARY (CONTINUED)

Cash Basis	A basis of accounting in which transactions are recognized only when cash is increased or decreased.
Character	The budgets of all governmental units in Indiana are prepared according to a form prescribed by the Indiana State Board of Accounts. The major classification for appropriations is the character level which forms the legal level of control. The four categories are 1) personal services, 2) supplies, 3) other services and charges and 4) capital.
C.I.O.	Chief Information Officer is the appointed Director of the Information Services Agency. This Agency is responsible for all data processing and coordinating the procurement and disposal of technology related equipment.
City-County Council	Marion County and the Consolidated City (Indianapolis) are governed under a Mayor-Council form of government. The legislative branch is called the City-County Council which consists of 25 Councillors elected from single member districts and four Councillors elected at large. The Councillors serve terms of four years. The excluded municipalities vote with the rest of the County for Mayor of the Consolidated City and the councillors at large, as well as their own officials.
County Option Income Tax (COIT)	A tax on adjusted gross income of residents and/or workers in Marion County. Adoption of the tax is an option for counties in Indiana. Distribution of the tax based on the amount of property taxes imposed by municipal governments.
Cumulative Capital Development Fund	A fund established to provide for certain capital needs of the county. This fund is shared by City and County governments and used for infrastructure projects benefiting the county-wide area. This fund is financed by a county-wide annual property tax levy.
Debt Service	The cost of paying principal and interest on borrowed money according to a predetermined payment schedule.
D.O.C	The Department of Corrections is a state agency that manages all state operated correctional facilities. After prisoners are convicted in a Marion County court, prisoners are typically transferred to a DOC facility to serve their sentence. DOC also manages the juvenile correctional institutions in Indiana and charges counties 50% of the operating costs for incarceration.
E-911	Enhanced - 911
Employee (or Fringe) Benefits	Contributions made by a government to meet commitments or obligations for employee fringe benefits. Included are the government's share of Social Security, pension obligations, health and life insurance plans.
Encumbrance	The commitment of appropriated funds to purchase an item or service. To encumber funds means to commit or set aside funds for a specific future expenditure.
Expenditure	The payment of cash on the transfer of property or services for the purpose of acquiring an asset, service or settling a loss.

MARION COUNTY 2002 ANNUAL BUDGET

GLOSSARY (CONTINUED)

FAMIS	Financial Accounting Management Information System is a KPMG mainframe computer software program which is the primary accounting and finance system for County and City government.
Fiscal Year	A twelve month period designated as the operating year for accounting and budgeting purposes. The fiscal year for Marion County government ends Dec. 31.
Function	A group of related activities aimed at accomplishing a major service or regulatory program for which a government is responsible (e.g., public safety).
Fund	A fiscal entity with revenues and expenses which are segregated for the purpose of carrying out a specific purpose or activity.
Fund Balance	The excess of assets of a fund over its liabilities, reserves and carryover.
FY2K	Fiscal Year 2000 is the name associated with bringing information technology into the year 2000 compliance.
Goal	A statement of broad direction, purpose or intent based on the needs of the community. A goal is general and timeless.
Guideline Budget	Desirable expenditure levels provided to departments in developing the coming year's recommended budget. Based on the prior year's adopted budget, excluding one-time expenditures, internal service requirements, and projected revenues.
IMAGIS	Indianapolis Mapping and Geographic Information System
Interfund Transfers	The movement of money between funds within the same government entity.
Intergovernmental Revenue	Funds received from the federal, state and other local government sources.
Internal Service Charges	The charges to user departments for internal services provided by another government agency, such as data processing.
Intragovernmental Revenue	Charges to other agencies within the same unit of government.
I.S.A.	Information Services Agency. A county agency charged with managing the information technology contract with a private vendor. ISA is also responsible for all billings and performance issues.
JUSTIS	Justice Information System is a computer program which performs case and record management for the criminal justice system.
Levy	To impose taxes for the support of government activities.

MARION COUNTY 2002 ANNUAL BUDGET

GLOSSARY (CONTINUED)

Line-Item Budget	A budget prepared along departmental lines that focuses on what is to be bought.
Object of Expenditure	An expenditure classification, referring to the lowest and most detailed level of description, such as furniture, or paper supplies.
MECA	Metropolitan Emergency Communications Agency. A county wide agency which handles all Enhanced 911 communications. MECA is also a separate general fund sub-fund with a set of self balancing accounts controlling the budget and revenues separately from County General.
Objective	Something to be accomplished in specific, well-defined and measurable terms and that is achievable within a specific time frame.
Operating Revenue	Funds that the government receives as income to pay for ongoing operations. It includes such items as taxes, fees from specific services, interest earnings, and grant revenues. Operating revenues are used to pay for day to day services.
Personal Services	Expenditures for salaries, wages, and fringe benefits of a government employee.
P.E.R.F.	Public Employees Retirement Fund is a state managed public employees pension fund.
Program	A group of related activities performed by one or more organizational units for the purpose of accomplishing a function for which the government is responsible.
P.T.R.C.	Property Tax Replacement Credits are a portion of the property tax bills that are paid by the State of Indiana and other local government revenue sources directly reducing the public's property tax bills. Total amount of credits average between 16% to 20%.
Reserve	An account used either to set aside budgeted revenues that are not required for expenditure in the current budget year or to earmark revenues for a specific future purpose.
Revenue	The sources of income for a government entity.
S.C.T.	Systems and Computer Technology Corp., the private for-profit company which was awarded the contract to provide all information technology services for City and County government.
State Board of Tax Commissioners (S.B.T.C.)	Makes final review of all budgets. It can revise, recover or restore on appeal budgets, levies, and tax rates removed by the City-County Council. Except for debt service funds, the State Board of Tax Commissioners may not increase a budget, levy or tax rate above the level originally advertised. If the budget seeks to exceed the tax limits of the state tax control laws, an excess levy may be granted if the excess levy meets state law requirements, and is approved by the State Board of Tax Commissioners. The State Board of Tax Commissioners is required to certify budgets, levies, and rates by February 15.

MARION COUNTY 2002 ANNUAL BUDGET

GLOSSARY (CONTINUED)

Supplemental Appropriation	An additional appropriation made by the governing body after the budget year has begun.
Supplemental Request Taxes	Programs or services or additional line item expenditures departments would like to have over their target (guideline) budget, or if revenues are higher than anticipated. Compulsory charges levied by a government for the purpose of financing services performed for the common benefit of the people. This term does not include specific charges made against particular persons or property for the current or permanent benefit, such as special assessments.
Transfers In/Out	Amounts transferred from one fund to another to assist in financing the services for the recipient fund.
Unencumbered Balance	Th amount of appropriation that is neither expended or encumbered. It is essentially the amount of money still available for future purposes.
UNIGOV	Indianapolis and Marion County are governed under a consolidated form of government called "UNIGOV". State legislation effective January 1, 1970, unified the Indianapolis and Marion County boundaries, and consolidated the delivery of many municipal services. At their own request, four municipalities were specifically excluded from the consolidated government. These excluded municipalities are the Town of Speedway, and the cities of Beech Grove, Lawrence, and Southport.

MARION COUNTY 2002 ANNUAL BUDGET

ACRONYMS

A. D. & S.	Alcohol and Drug Services (Fund)
ADPICS	Advanced Purchasing and Inventory Control System
BPREP	Budget Preparation System, a Peat Marwick mainframe application
C.C.A.	Corrections Corporation of America
C.O.I.T	County Option Income Tax
C.V.B.	Court Violations Bureau
D.O.C.	Department of Corrections
E-911	Enhanced 911
FAMIS	Financial Accounting Management Information System, a Peat Marwick mainframe application
F.I.C.A.	Federal Insurance Corp. of America (Social Security)
F.I.T.	Financial Institutions Tax
F.O.P.	Fraternal Order of Police
IMAGIS	Indianapolis Mapping and Geographic Information System
I.S.A.	Information Services Agency
JUSTIS	Justice Information System
M.C.S.D.	Marion County Sheriff's Department
M.E.C.A.	Metropolitan Emergency Communications Agency (Enhanced 911)
M.C.L.E.	Marion County Law Enforcement
P.E.R.F.	Public Employee Retirement Fund
P.T.R.C.	Property Tax Replacement Credit
S.B.A.	Indiana State Board of Accounts
S.B.T.C.	Indiana State Board of Tax Commissioners
S.C.T.	Systems and Computer Technology Corp.
UNIGOV	Unified Government (or Consolidated form of government)